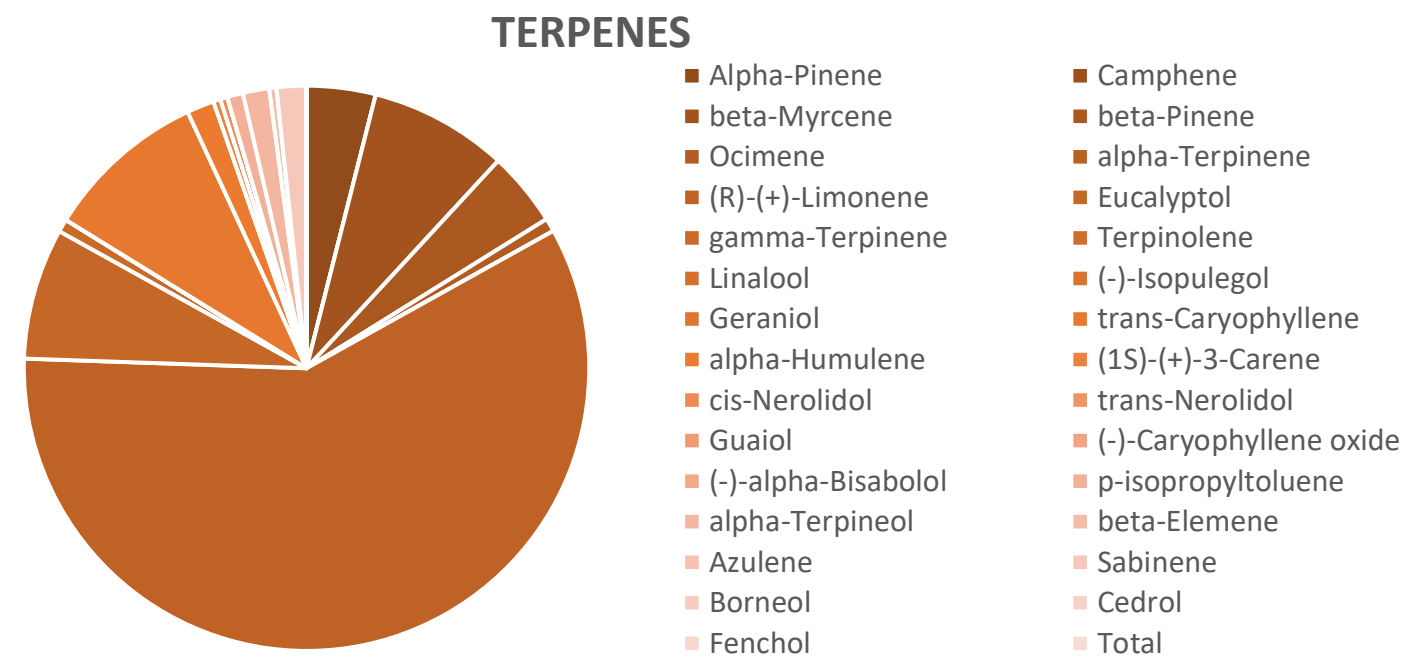
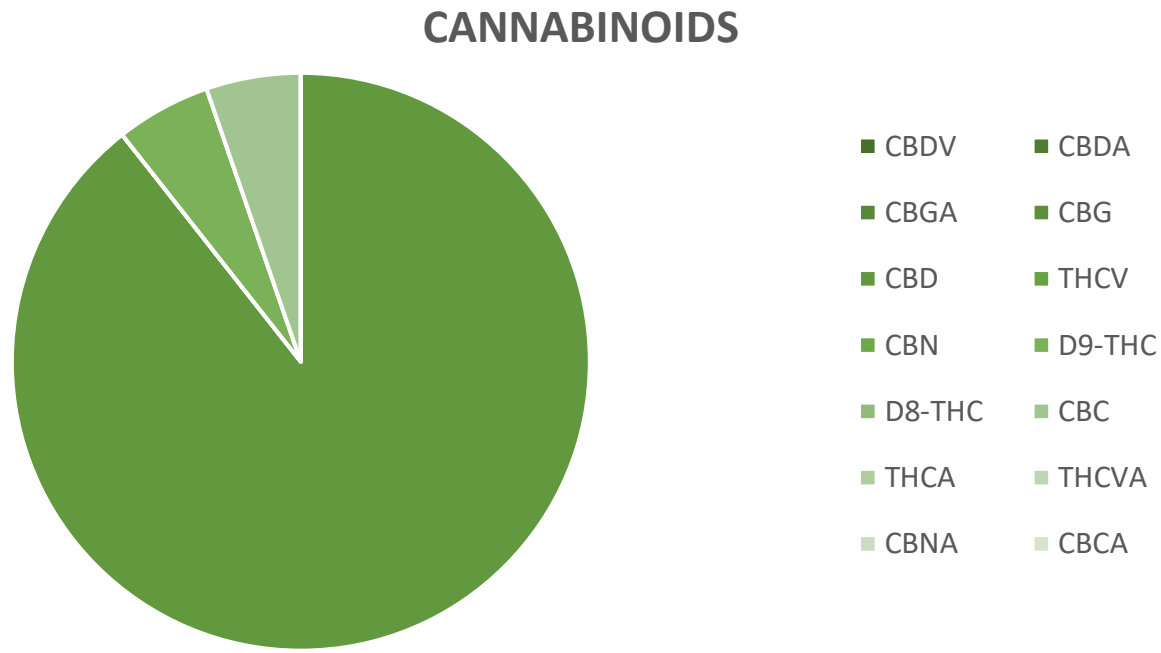


Specimen #: 1666-4

**Sample Name:** 1500mg 2oz Salve  
**Customer Name:** Catocin Hemp  
**Sample Type:** Infused Product  
**Date Sampled:** 2/12/2021  
**Date Tested:** 2/13/2021

**Customer Lot #:** 02112101  
**Sample ID:** 1666-4  
**Parent Pkg ID:** N/A  
**Licensee Contact:** 2019-034



### Results Summary

<b>0.18%</b>	<b>3.08%</b>
Total THC	Total CBD
<b>0.00%</b>	<b>0.00%</b>
THCa	CBDa

Moisture NOT TESTED

### Cannabinoid Test Results

Analyte	LOQ	Mass %	Mass mg/1oz
CBDV	0.08	ND	0.00
CBDA	0.08	ND	0.00
CBGA	0.08	ND	0.00
CBG	0.08	ND	0.00
CBD	0.08	3.08	873.86
THCV	0.08	ND	0.00
CBN	0.08	ND	0.00
Δ9-THC	0.08	0.18	51.99
Δ8-THC	0.08	ND	0.00
CBC	0.08	0.18	51.74
THCA	0.08	ND	0.00
THCVA	0.08	ND	0.00
CBNA	0.08	ND	0.00
CBCA	0.08	ND	0.00
<b>Total</b>		<b>3.45%</b>	

Total THC= THCa \* 0.877 + Δ9-THC; Total CBD = CBDa \* 0.877 + CBD

Cannabinoid potency values are reported by percentage of dry weight determined via loss on drying; Unless otherwise stated all quality control samples performed within specifications established by the Laboratory.

### Terpene Test Results

Analyte	LOQ	Mass %	Mass mg/g
Alpha-Pinene	0.01	0.144	1.44
Camphene	0.01	<LOQ	0
beta-Myrcene	0.01	0.289	2.89
beta-Pinene	0.01	0.156	1.56
Ocimene	0.01	0.028	0.28
alpha-Terpinene	0.01	<LOQ	0
(R)-(+)-Limonene	0.01	2.139	21.39
Eucalyptol	0.01	0.274	2.74
gamma-Terpinene	0.01	0.027	0.27
Terpinolene	0.01	<LOQ	0
Linalool	0.01	ND	0
(-)-Isopulegol	0.01	ND	0
Geraniol	0.01	ND	0
trans-Caryophyllene	0.01	0.339	3.39
alpha-Humulene	0.01	0.057	0.57
(1S)-(+)-3-Carene	0.01	0.015	0.15
cis-Nerolidol	0.01	0.015	0.15
trans-Nerolidol	0.01	ND	0
Guaiol	0.01	ND	0
(-)-Caryophyllene oxide	0.01	ND	0
(-)-alpha-Bisabolol	0.01	ND	0
p-isopropyltoluene	0.01	0.033	0.33
alpha-Terpineol	0.01	0.055	0.55
beta-Elemene	0.01	0.015	0.15
Azulene	0.01	ND	0
Sabinene	0.01	0.062	0.62
Borneol	0.01	ND	0
Cedrol	0.01	ND	0
Fenchol	0.01	ND	0
<b>Total</b>		<b>3.65%</b>	

The reported result is based on a sample weight with the applicable moisture content for that sample; Unless otherwise stated all quality control samples performed within specifications established by the Laboratory.

Sample collection methods and uncertainty of measurement associated with results reported in this certificate are available upon request. Cannabinoids measured by HPLC-UV. Terpenes measured by GCMS. Microbes measured by culture-based methods. Mycotoxins and pesticides measured by LCMS. Heavy Metals analyzed by ICPMS. Water Activity measured by water activity meter; moisture content by LOD. Unless otherwise indicated, results were reviewed and verified by the Lab Director, and issuance of this CoA was authorized by the Lab Director. Action limits set according to MMCC Technical Authority for Medical Cannabis Testing, 15 November 2019. Results valid only for the exact material sampled and analyzed. Specimens stored in a cool, dry place if not analyzed immediately.

